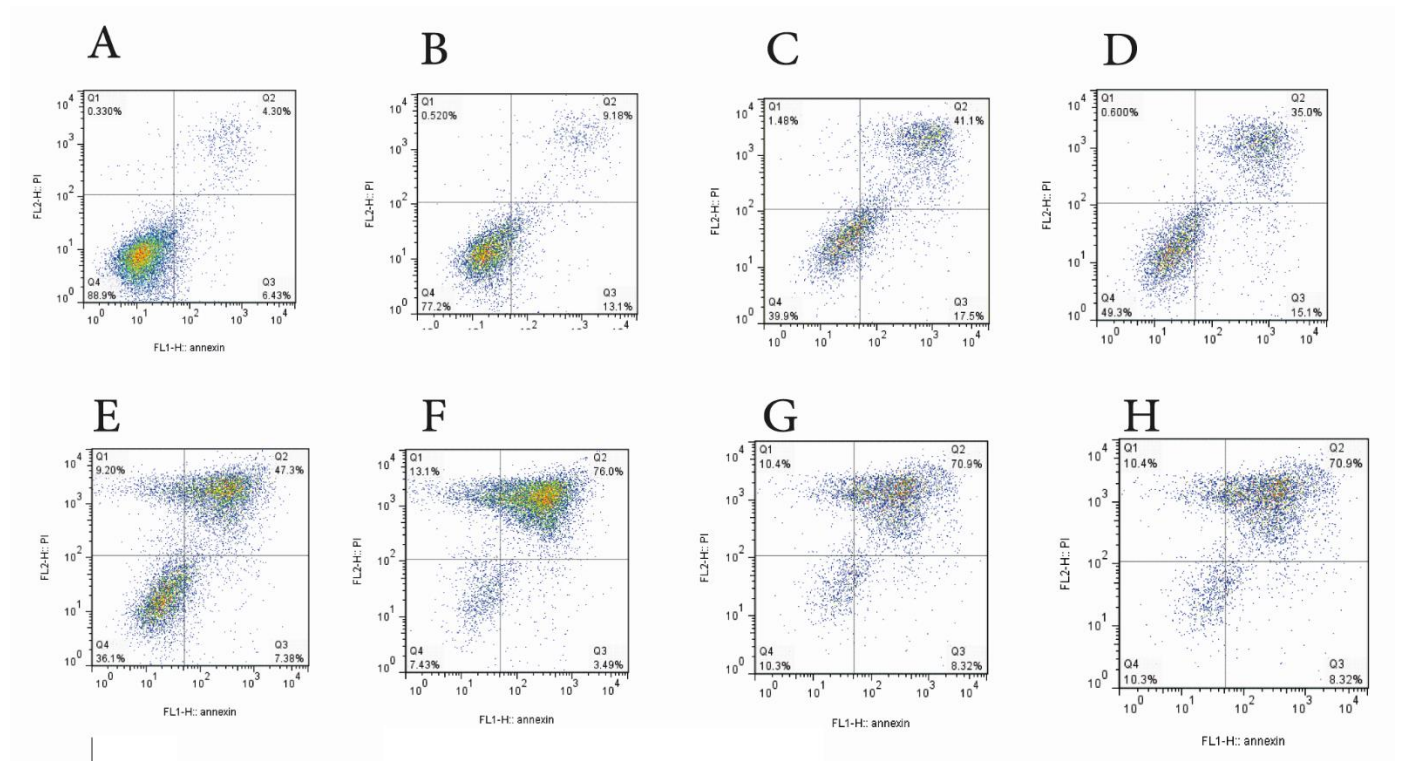
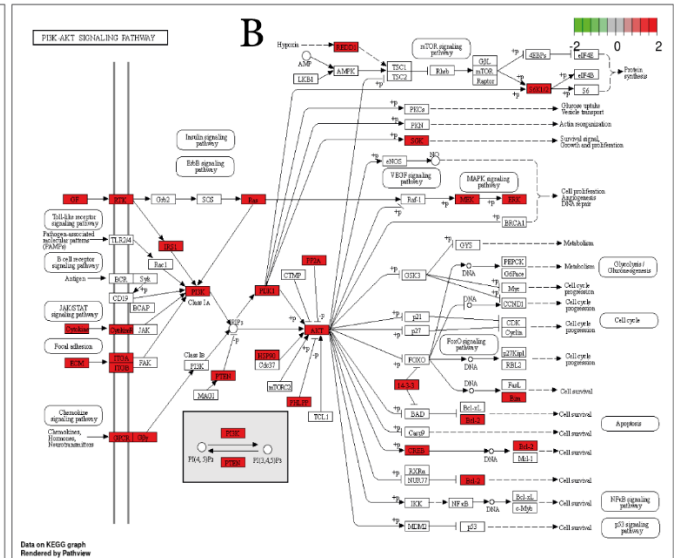
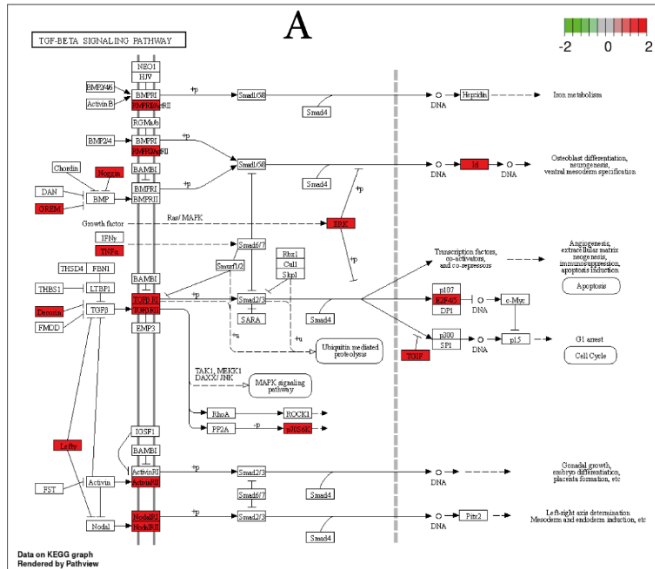


Appendix 1: Flow cytometry analysis has been utilized to proof the identity of the line.

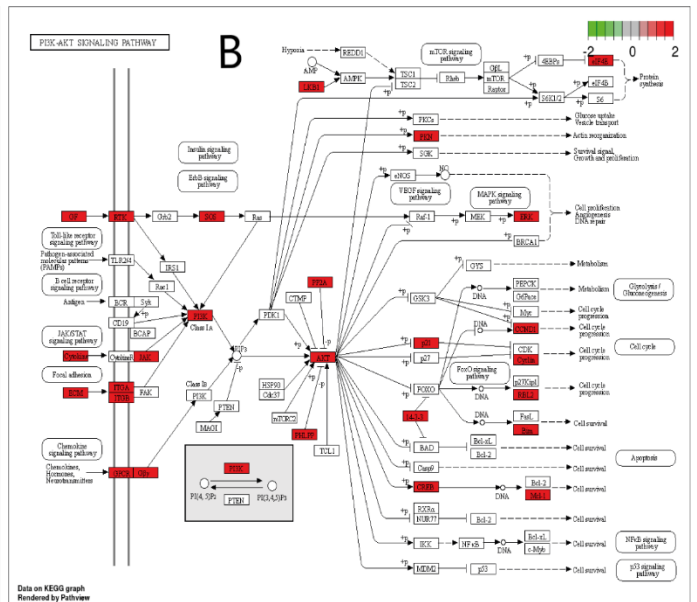
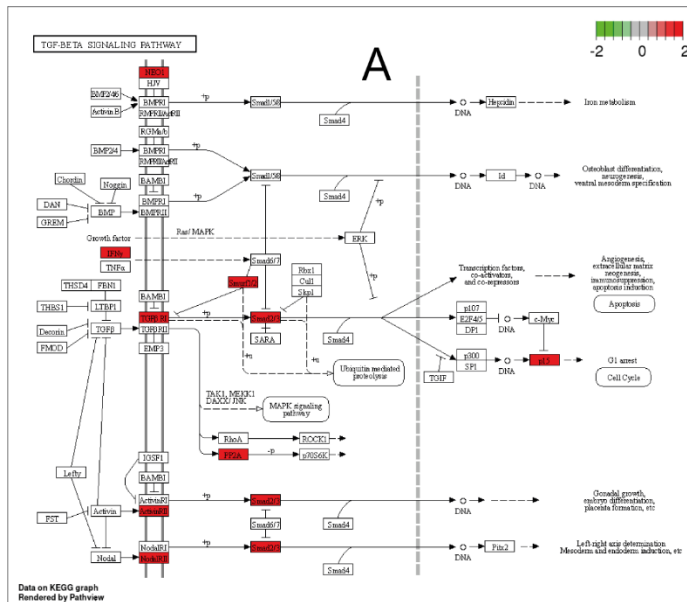
NALM6 cell



Appendix 2: The flow cytometry analysis following different treatment in the NALM6 cell line after 48. **A**, untreated cells; **B**, 0.8 nM vincristine; **C**, 1.2 nM vincristine; **D**, 1.925 μ M parthenolide; **E**, 0.5mM vitamin C; **F**, 0.75mM vitamin C; **G**, 0.5mM vitamin C combined with 0.8nM vincristine; **H**, 0.5mM vitamin C combined with 1.925 μ M parthenolide



Appendix 3. KEGG pathway enrichment analyses of the differentially expressed genes targeted by each miRNA; **A**, miR-18-5p regulating TGF- β pathway; **B**, miR-181b-5p regulating PI3K pathway. Red items showed significant changes.



Appendix 4: KEGG pathway enrichment analyses of the differentially expressed genes targeted by each miRNA; **A**, miR-125b-5p regulating TGF- β pathway; **B**, miR-17-5p regulating PI3K pathway. Red items showed significant changes.